



# SHORES CENTER

REDWOOD CITY, CA

JOSH ROWELL | 650.358.5261

CHRISTIAN PRELLE | 650.486.2204



100 Marine Parkway

**NEWMARK**



**CENTER  
CAPITAL**



**PRINCE STREET  
PARTNERS**





1 Twin Dolphin Drive

**PROJECT HIGHLIGHTS**

**HIGHLIGHTS**

- Three premier Class A office buildings totaling ±146,101 SF
- Water views along lagoon
- Central peninsula location - 15 minutes from SFO & Downtown Palo Alto
- Walking distance to Redwood Shores Marketplace, Bay Club, & Grand Bay Hotel
- Convenient freeway access to Highway 101

**FEATURES**

- Shuttle service to San Carlos Caltrain station
- New landscape & lobbies
- On-site gym with showers
- Ample parking
- On-site property management team

**RECENT PROJECT UPGRADES**  
NEW LANDSCAPING AND LOBBIES



 **SPEC SUITE**  
3 TWIN DOLPHIN

## 100 MARINE PARKWAY

### SECOND FLOOR

- Suite 200: ±7,324 SF\*
- Suite 250: ±3,115 SF\*
- Suite 276: ±3,312 SF\*

### THIRD FLOOR

- Suite 350: ±3,270 SF

*\*Suites can be combined for ±13,751 SF*

## 3 TWIN DOLPHIN DRIVE

### FIRST FLOOR

- Suite 150: ±3,506 SF

### SECOND FLOOR

- Suite 200: ±4,863 SF
- Suite 225: ±8,951 SF
- Suite 250: ±1,501 SF
- Suite 260: ±1,848 SF

### THIRD FLOOR

- Suite 300: ±2,437 SF
- Suite 350: ±4,066 SF
- Suite 375: ±4,228 SF



# AVAILABLE SPACES

MARINE PKWY & TWIN DOLPHIN

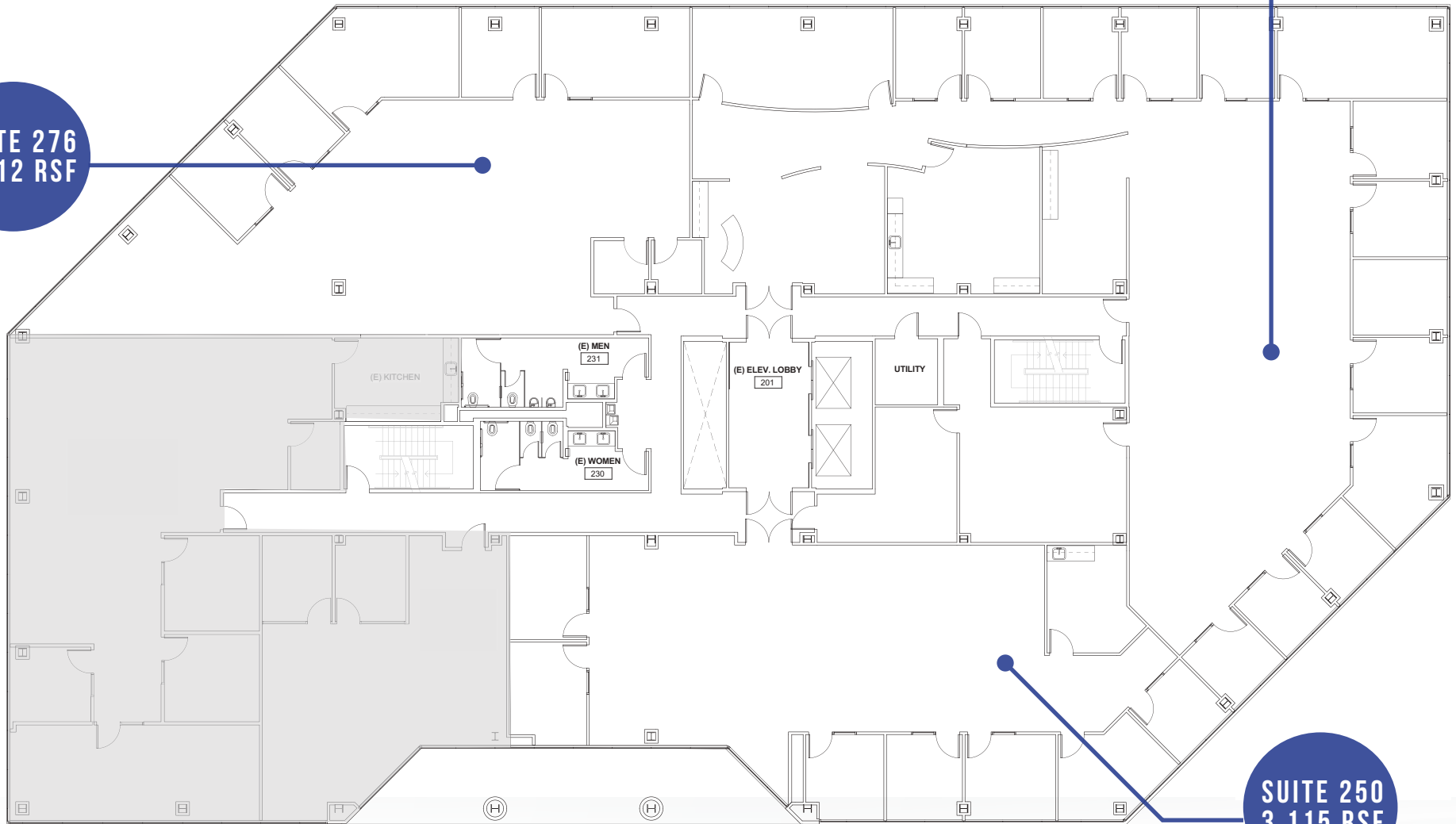
# FLOOR PLANS

100 MARINE PARKWAY

SECOND FLOOR • Suites can be combined for ±13,751 SF

SUITE 276  
3,312 RSF

SUITE 200  
7,324 RSF



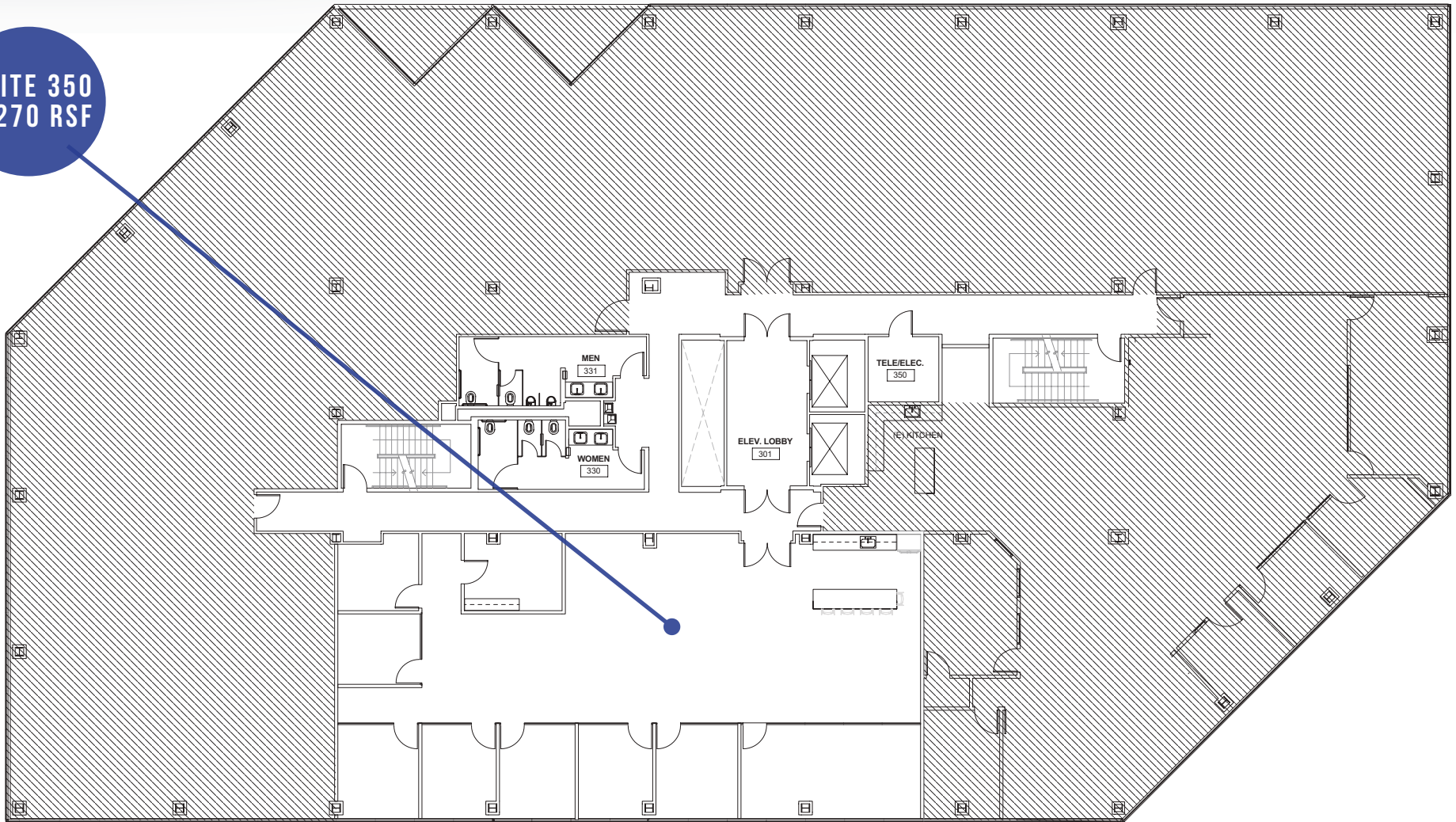
SUITE 250  
3,115 RSF

# FLOOR PLANS

100 MARINE PARKWAY

THIRD FLOOR

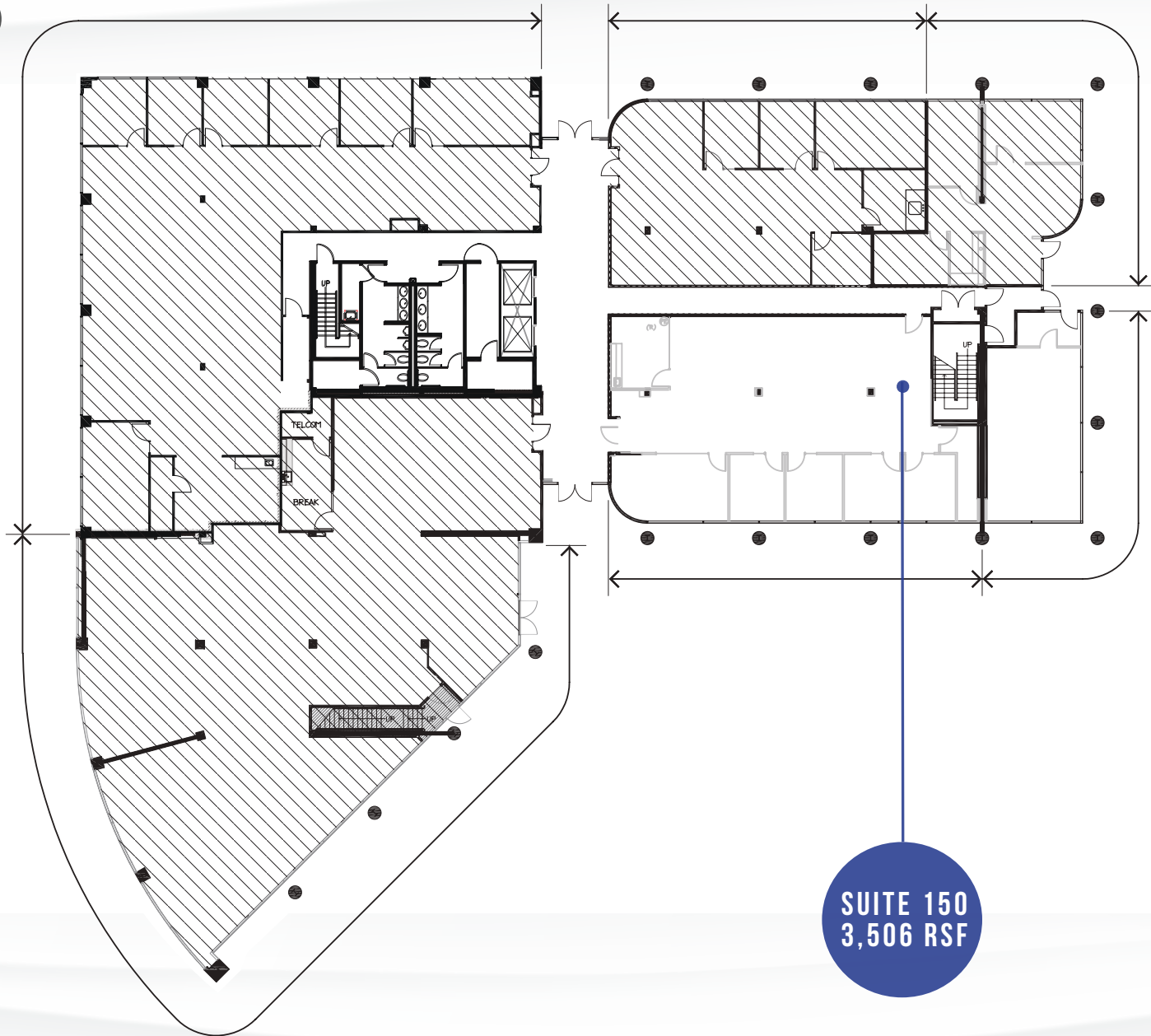
SUITE 350  
3,270 RSF



# FLOOR PLANS

3 TWIN DOLPHIN DRIVE

FIRST FLOOR

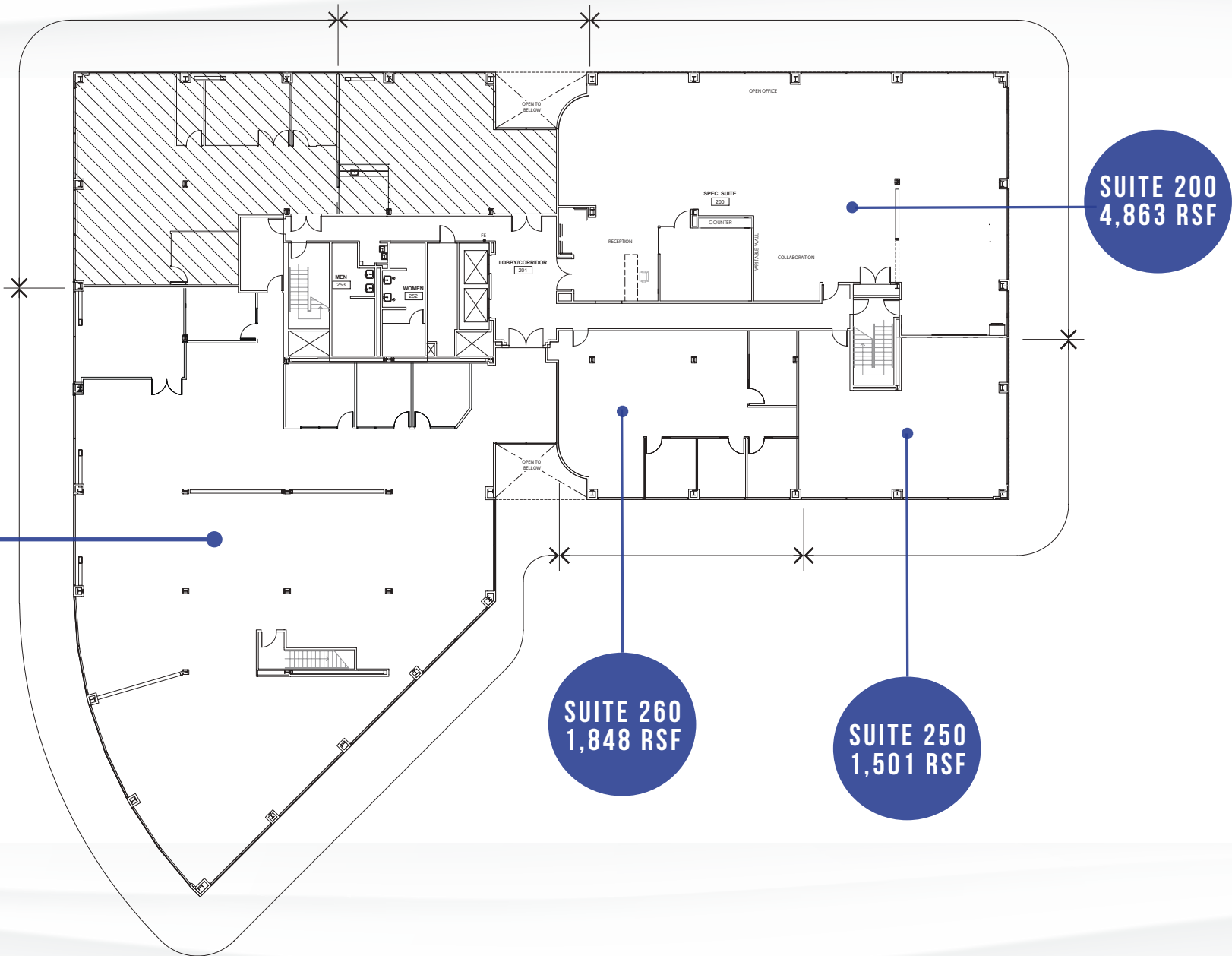


SUITE 150  
3,506 RSF

# FLOOR PLANS

## 3 TWIN DOLPHIN DRIVE

### SECOND FLOOR



**SUITE 225**  
8,951 RSF

**SUITE 200**  
4,863 RSF

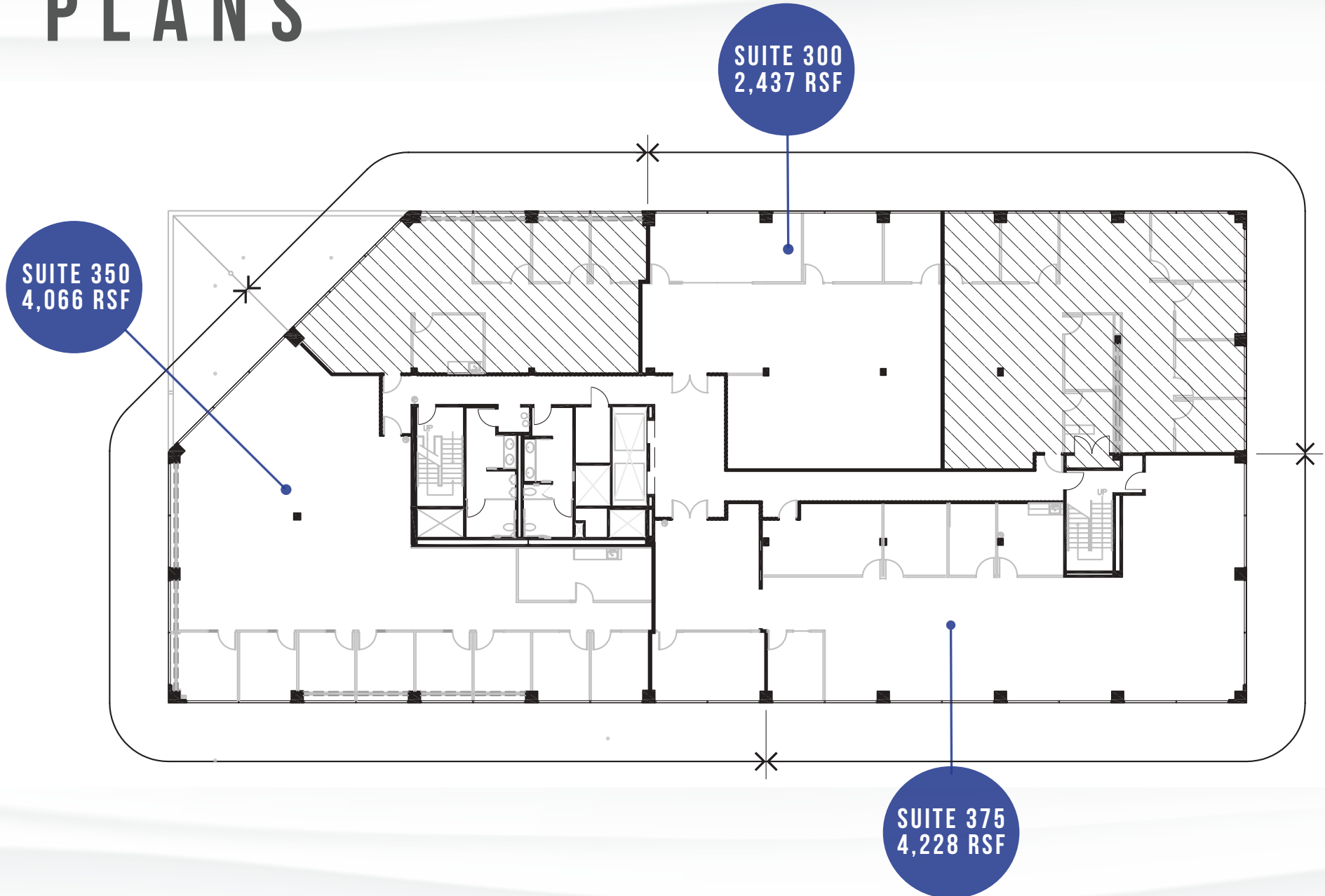
**SUITE 260**  
1,848 RSF

**SUITE 250**  
1,501 RSF

# FLOOR PLANS

3 TWIN DOLPHIN DRIVE

THIRD FLOOR



# AMENITIES MAP

## QUICK SERVICE

- 1 Starbucks
- 2 Jamba Juice
- 3 Una Mas Mexican Grill
- 4 Falafel Tazah
- 5 Nob Hill Foods
- 6 Togo's Sandwiches
- 7 Steve's Cafe & Catering
- 8 Starbucks
- 9 In N Out Burger
- 10 Gherkin's Sandwich Shop

## DINING

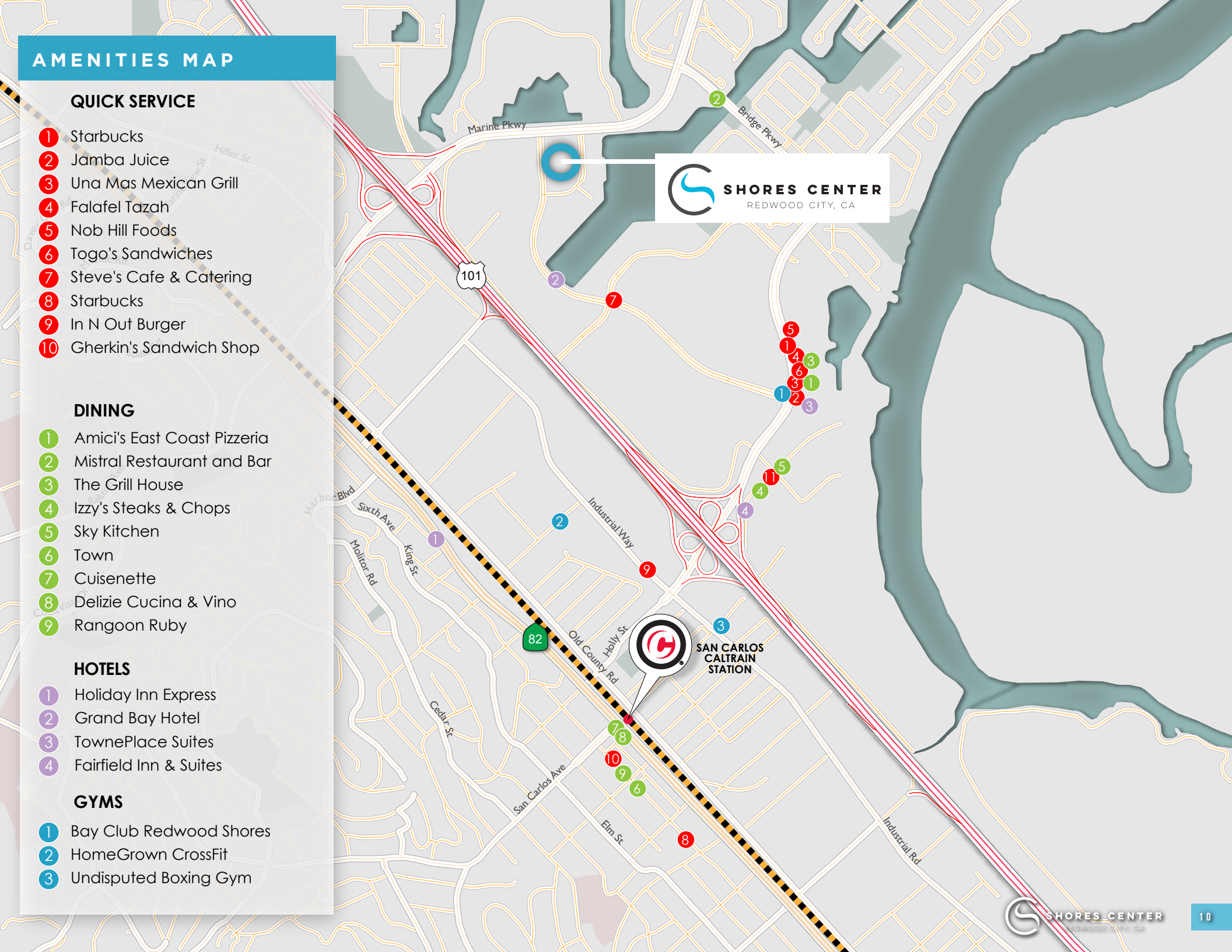
- 1 Amici's East Coast Pizzeria
- 2 Mistral Restaurant and Bar
- 3 The Grill House
- 4 Izzy's Steaks & Chops
- 5 Sky Kitchen
- 6 Town
- 7 Cuisenette
- 8 Delizie Cucina & Vino
- 9 Rangoon Ruby

## HOTELS

- 1 Holiday Inn Express
- 2 Grand Bay Hotel
- 3 TownePlace Suites
- 4 Fairfield Inn & Suites

## GYMS

- 1 Bay Club Redwood Shores
- 2 HomeGrown CrossFit
- 3 Undisputed Boxing Gym



# SHUTTLE SERVICES

## REDWOOD SHORES TWIN DOLPHIN AREA CALTRAIN SCHEDULE + MAP

PM TRAINS

Northbound Train No.	211	221	225	231
Arrives San Carlos	6:55	7:55	8:24	8:55
Southbound Train No.	210	216	220	226
Arrives San Carlos	7:15	7:54	8:15	8:54
<b>AM LOOP</b>				
Depart San Carlos Caltrain Station	7:20	8:00	8:32	9:02
100 Redwood Shores Pkwy (Bus Stop)	7:25	8:05	8:37	9:07
555 Twin Dolphin	7:27	8:07	8:39	9:09
333 Twin Dolphin	7:28	8:08	8:40	9:10
Shorebreeze	7:30	8:10	8:42	9:12
Sofitel	7:31	8:11	8:43	9:13
<b>101 Twin Dolphin (Shores Center)</b>	<b>7:33</b>	<b>8:13</b>	<b>8:45</b>	<b>9:15</b>
100 Oracle Park	7:35	8:15	8:47	9:17
300 Oracle Park	7:38	8:18	8:50	9:20
500 Oracle Park	7:39	8:19	8:51	9:21

AM TRAINS

<b>PM LOOP</b>						
555 Twin Dolphin	2:25	3:02	3:40	4:46	5:30	6:30
333 Twin Dolphin	2:26	3:03	3:41	4:47	5:30	6:31
Shorebreeze	2:28	3:05	3:43	4:49	5:33	6:33
Sofitel (255 & 275 Shoreline Drive)	2:29	3:06	3:44	4:50	5:34	6:34
<b>101 Twin Dolphin (Shores Center)</b>	<b>2:31</b>	<b>3:08</b>	<b>3:46</b>	<b>4:52</b>	<b>5:36</b>	<b>6:36</b>
100 Oracle Park	2:33	3:10	3:48	4:54	5:38	6:38
300 Oracle Park	2:36	3:13	3:51	4:57	5:41	6:41
500 Oracle Park	2:37	3:14	3:52	4:58	5:42	6:42
100 Redwood Shores Pkwy (Bus Stop)	2:44	3:21	3:59	5:05	5:49	6:49
Arrive San Carlos Caltrain Station	2:54	3:31	4:09	5:15	5:59	6:59
Northbound Train No.	257	159	261	269	277	287
Arrives San Carlos	3:23	3:50	4:29	5:29	6:04	7:04
Southbound Train No.	254	156	258	264	274	284
Arrives San Carlos	3:14	3:52	4:14	5:20	6:20	7:20





# SHORES CENTER

REDWOOD CITY, CA

**JOSH ROWELL**

650.358.5261

josh.rowell@nmrk.com

CA RE License# 01236434

**CHRISTIAN PRELLE**

650.486.2204

christian.prelle@colliers.com

CA RE License# 01888351

The distributor of this communication is performing acts for which a real estate license is required. The information contained herein has been obtained from sources deemed reliable but has not been verified and no guarantee, warranty or representation, either express or implied, is made with respect to such information. Terms of sale or lease and availability are subject to change or withdrawal without notice. MP-1298 • 07/24

2950 SOUTH DELAWARE STREET, SUITE 125  
SAN MATEO, CA 94403

**NEWMARK**



**CENTER  
CAPITAL**



**PRINCE STREET  
PARTNERS**

**Colliers**